

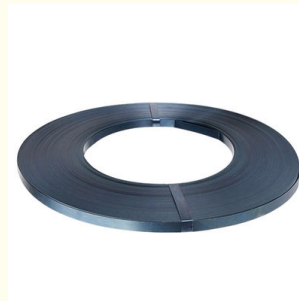
Q235 Spring Hardened And Tempered Steel Strips 25mm Roasted blue

Our Product Introduction

for more products please visit us on setuopack.com

Basic Information

- Place of Origin: China
- Brand Name: Zhuoyu
- Certification: CE
- Model Number: G2509
- Minimum Order Quantity: 40kg
- Price: To be discussed
- Delivery Time: 5-8 work days
- Payment Terms: L/C, D/A, D/P, T/T, Western Union, MoneyGram
- Supply Ability: 100+Box+10days

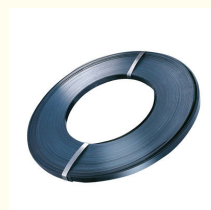


Product Specification

- Width: 25mm
- Thickness: 0.9mm
- Weight: 40kg
- Material: Q235
- Surface: Roasted Blue
- Tensile Strength: Rm700MPA
- Highlight: Q235 hardened and tempered steel strips, Roasted Blue hardened and tempered steel strips, Roasted Blue hardened spring steel strips



More Images



Product Description

DESCRIPTION

The characteristics of steel strips are ductility, tensile strength, and fracture resistance.

This material uses roasted blue, which has high strength and exhibits good flexibility and deformability under external forces. Meanwhile, the high tensile strength of the steel strip ensures that it will not easily break or fail even under high tensile stress, ensuring the safety and stability of the packaging.

This feature enables the steel strip to maintain good performance even in outdoor or humid environments, reducing the frequency and cost of replacement caused by rust.

It can be used to secure and bundle various goods, providing stable and reliable packaging effects for heavy and light items. At the same time, its lightweight and easy to operate characteristics make the packaging process simpler and faster, improving work efficiency.

Modle	G2509
Width	25mm

Our Product Introduction

for more products please visit us on setupack.com

Thickness	0.9mm
Weight	40kg
Surface	Roasted blue
material	Q235
tensile strength	Mr700MPA



Anhui Zhuoyu Industrial Manufacture Co., Ltd.



setupack.com

Room 101, 1st Floor, Building A3, Innovation industrial Park, 800 Wangjiang WestRoad, High-tech Zone, Hefei,
Anhui, China.